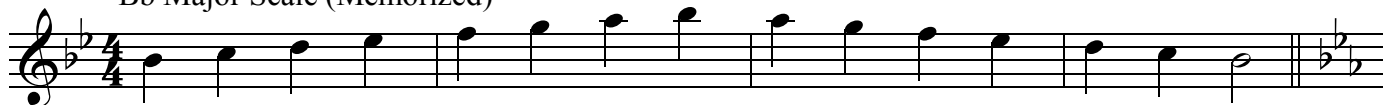


SWOSU MIDDLE SCHOOL BAND CAMP

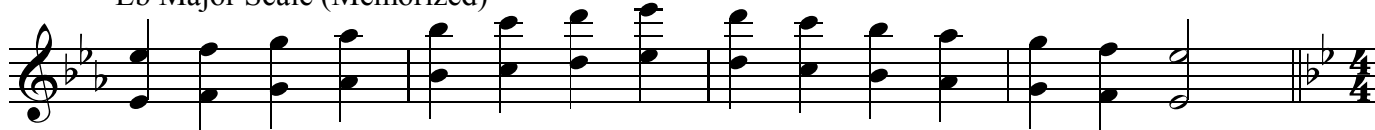
AUDITION MATERIAL - 2016

FLUTE

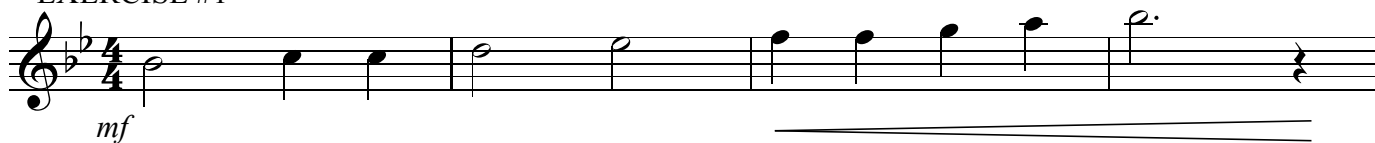
Bb Major Scale (Memorized)



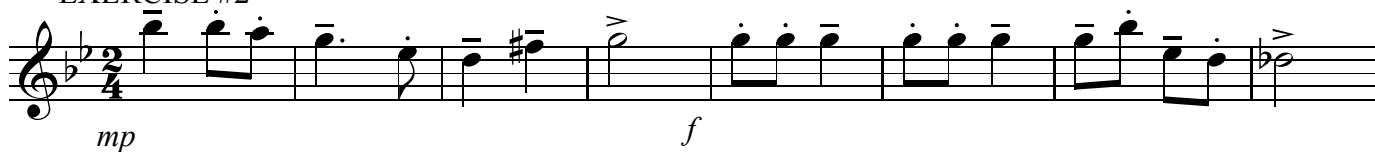
Eb Major Scale (Memorized)



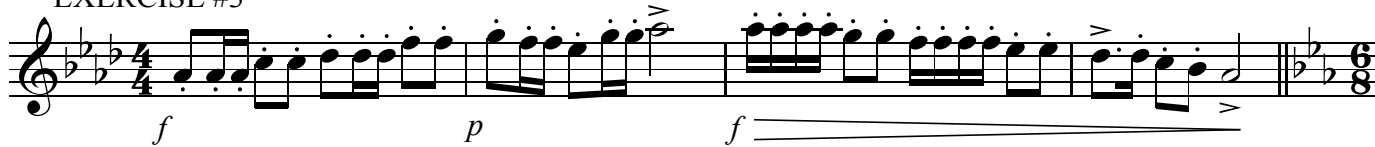
EXERCISE #1



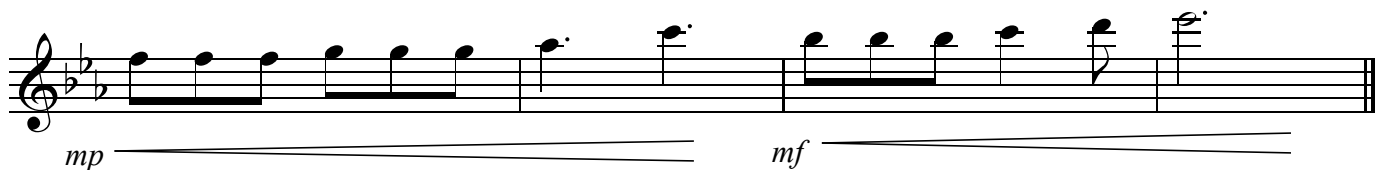
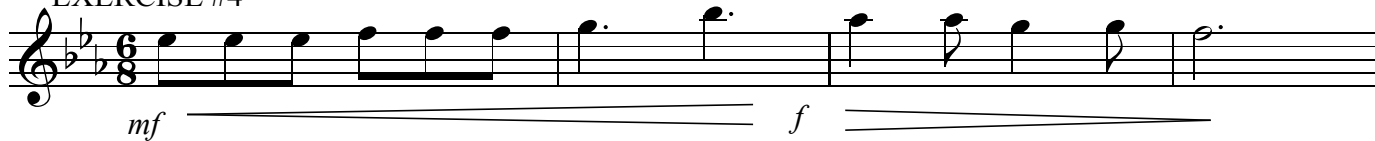
EXERCISE #2



EXERCISE #3



EXERCISE #4

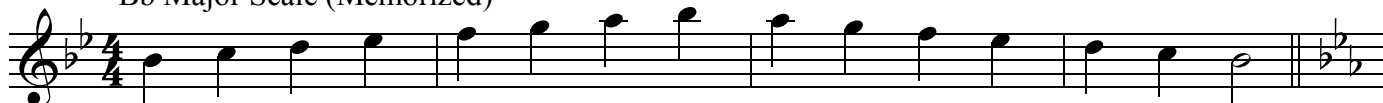


SWOSU MIDDLE SCHOOL BAND CAMP

AUDITION MATERIAL - 2016

OBOE/MALLET PERCUSSION

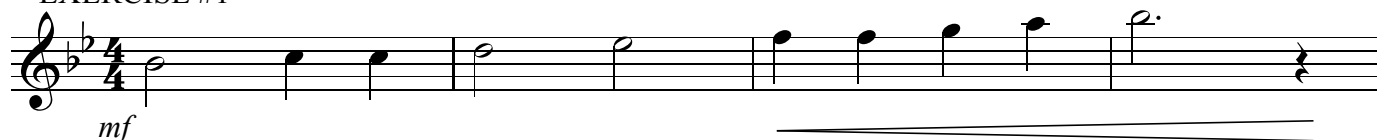
Bb Major Scale (Memorized)



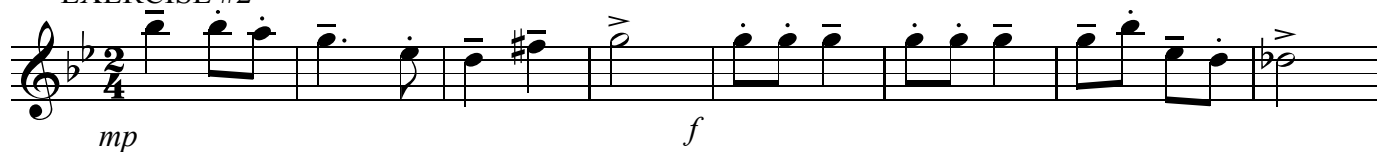
Eb Major Scale (Memorized)



EXERCISE #1



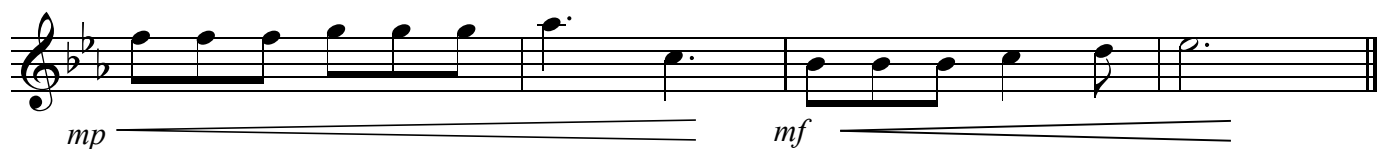
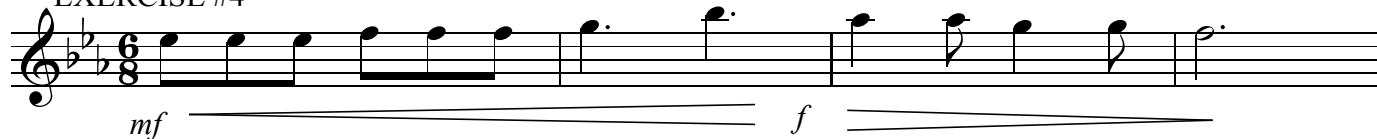
EXERCISE #2



EXERCISE #3



EXERCISE #4

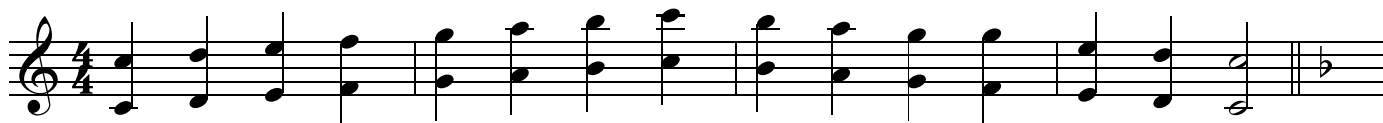


SWOSU MIDDLE SCHOOL BAND CAMP

AUDITION MATERIAL - 2016

CLARINET/BASS CLARINET

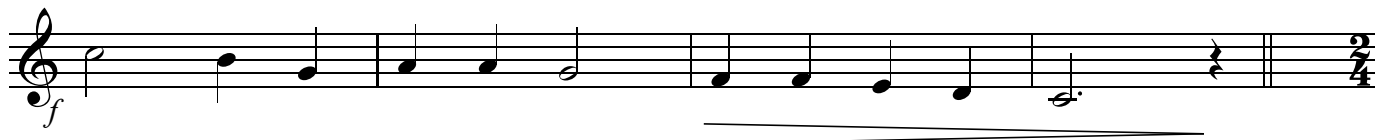
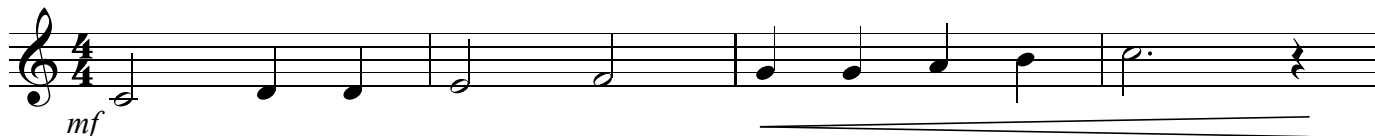
C Major Scale (Memorized)



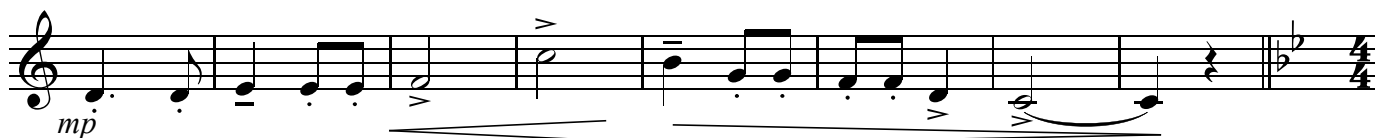
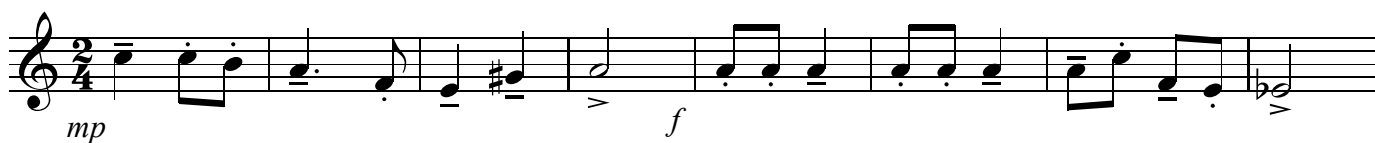
F Major Scale (Memorized)



EXERCISE #1



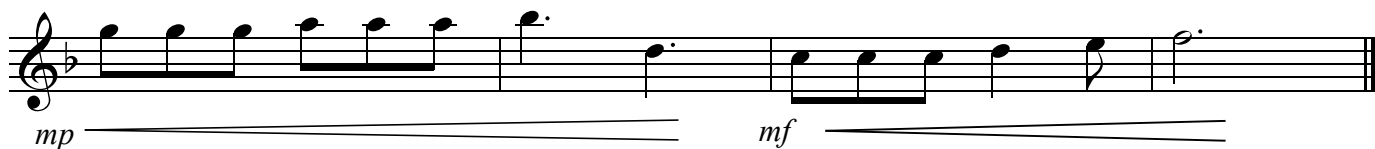
EXERCISE #2



EXERCISE #3



EXERCISE #4

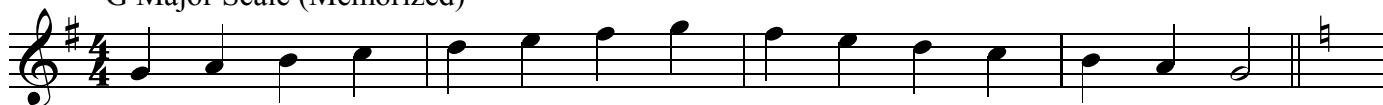


SWOSU MIDDLE SCHOOL BAND CAMP

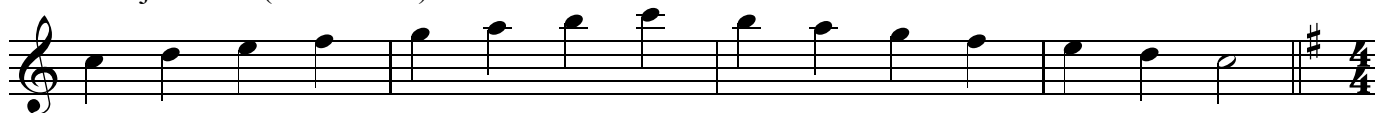
AUDITION MATERIAL - 2016

ALTO/BARITONE SAXOPHONE

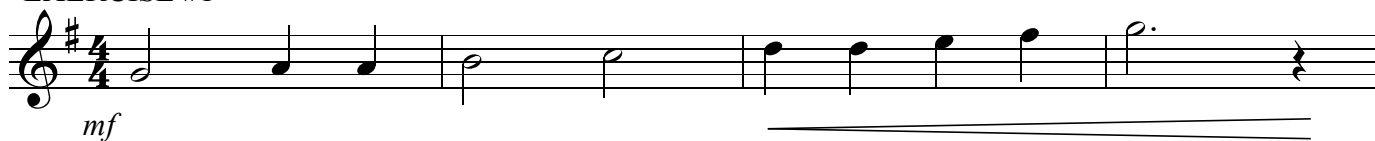
G Major Scale (Memorized)



C Major Scale (Memorized)



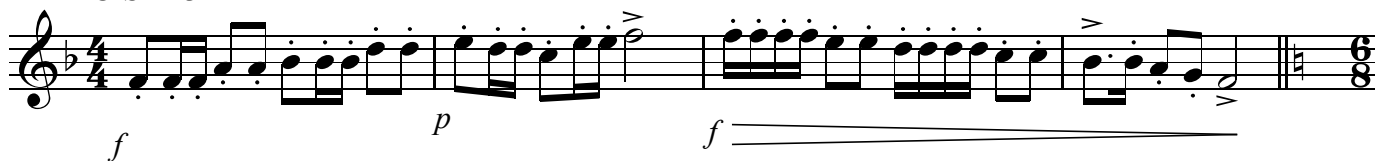
EXERCISE #1



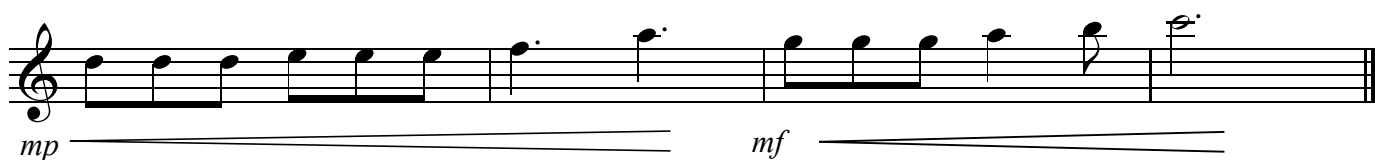
EXERCISE #2



EXERCISE #3



EXERCISE #4

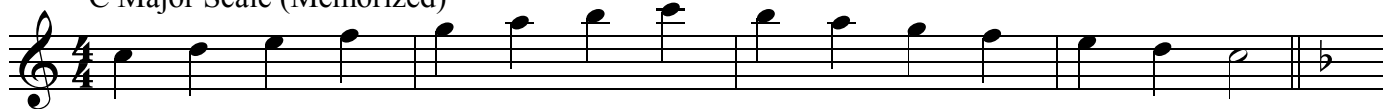


SWOSU MIDDLE SCHOOL BAND CAMP

AUDITION MATERIAL - 2016

TENOR SAXOPHONE

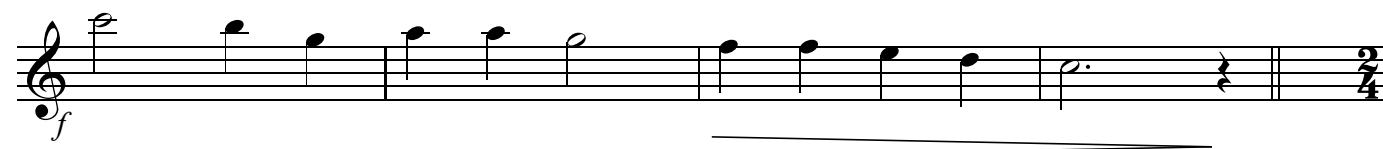
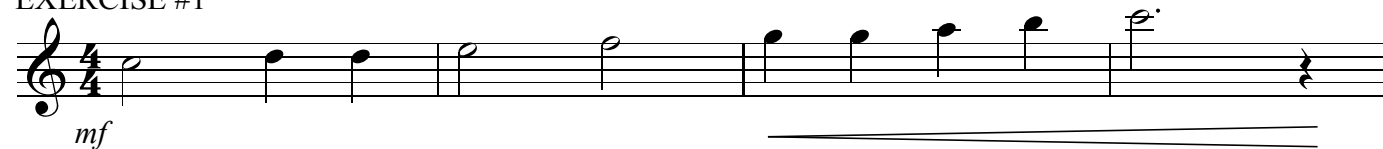
C Major Scale (Memorized)



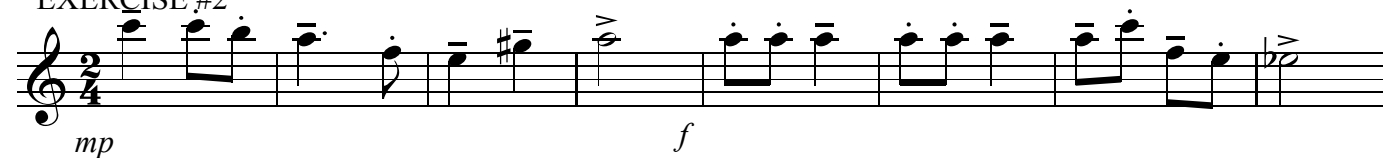
F Major Scale (Memorized)



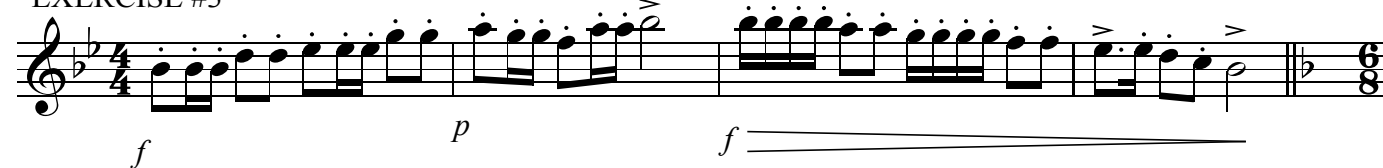
EXERCISE #1



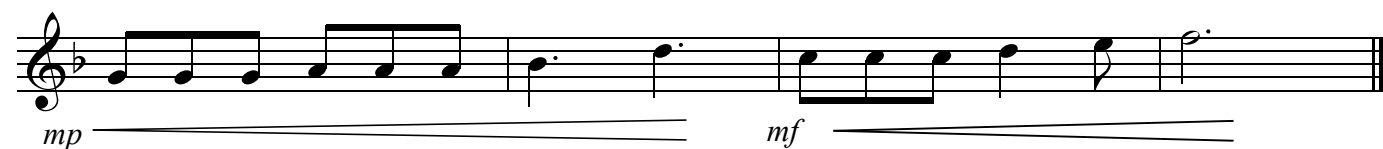
EXERCISE #2



EXERCISE #3



EXERCISE #4



SWOSU MIDDLE SCHOOL BAND CAMP

AUDITION MATERIAL - 2016

TRUMPET/T.C. EUPHONIUM

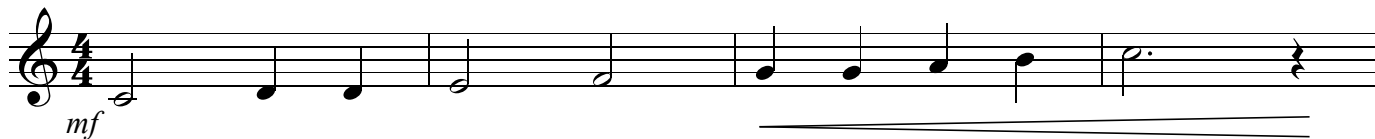
C Major Scale (Memorized)



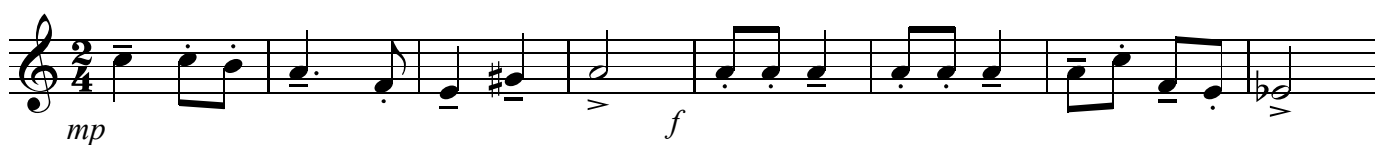
F Major Scale (Memorized)



EXERCISE #1



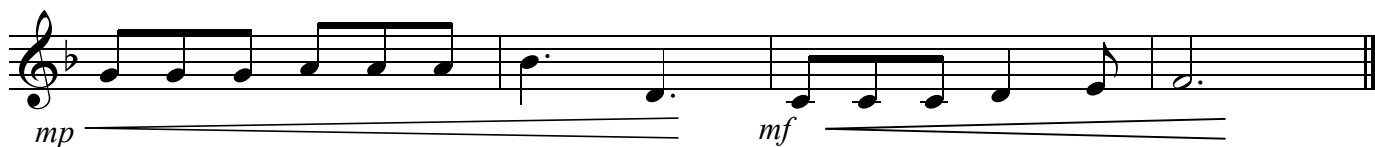
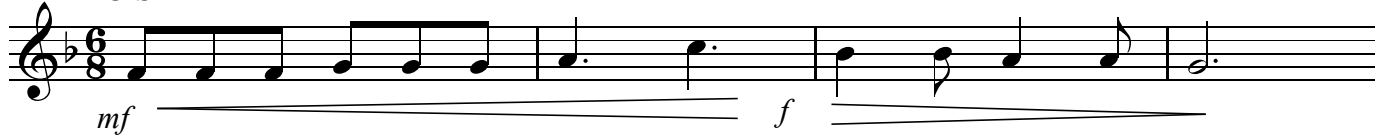
EXERCISE #2



EXERCISE #3



EXERCISE #4



SWOSU MIDDLE SCHOOL BAND CAMP

AUDITION MATERIAL - 2016

HORN

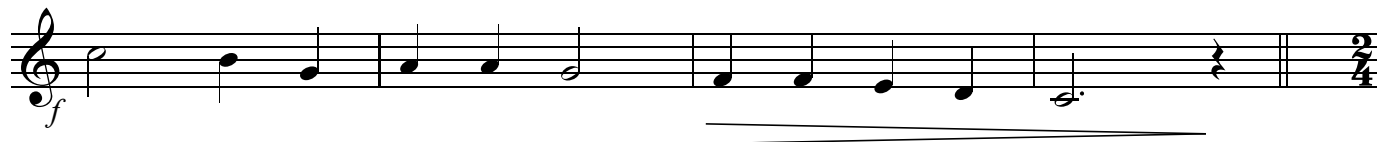
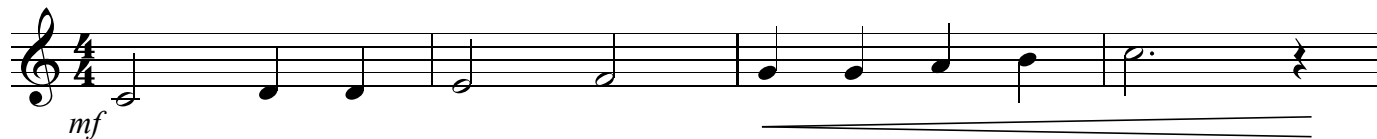
F Major Scale (Memorized)



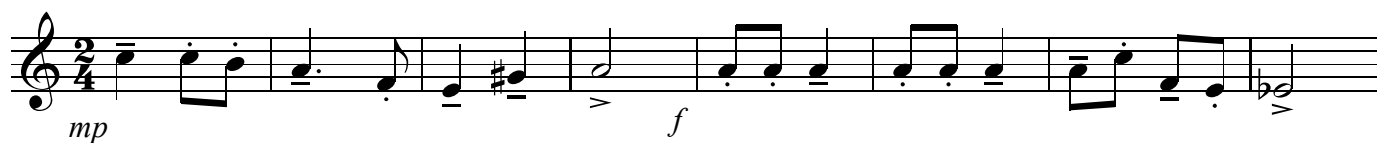
Bb Major Scale (Memorized)



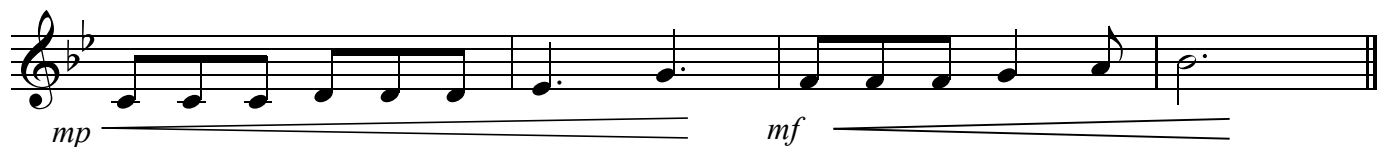
EXERCISE #1



EXERCISE #2



EXERCISE #3



SWOSU MIDDLE SCHOOL BAND CAMP

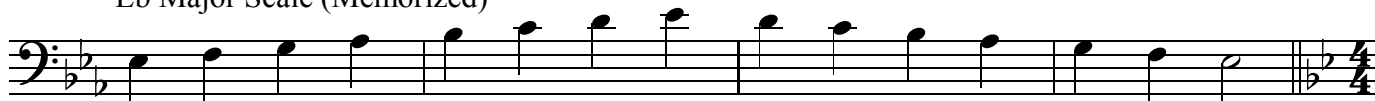
AUDITION MATERIAL -- 2013

TROMBONE/EUPHONIUM B.C./BASSOON

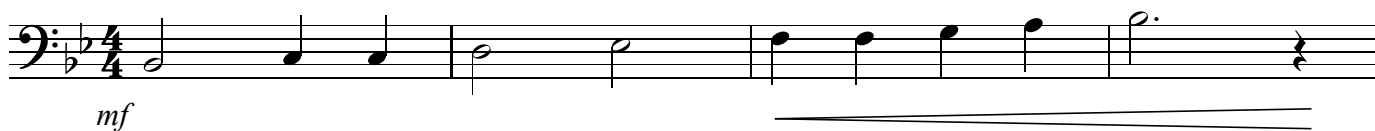
Bb Major Scale (Memorized)



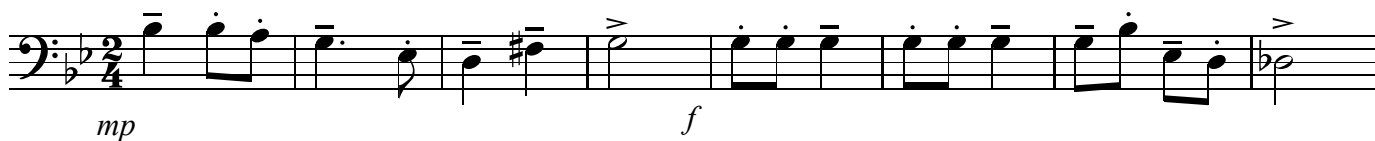
Eb Major Scale (Memorized)



EXERCISE #1



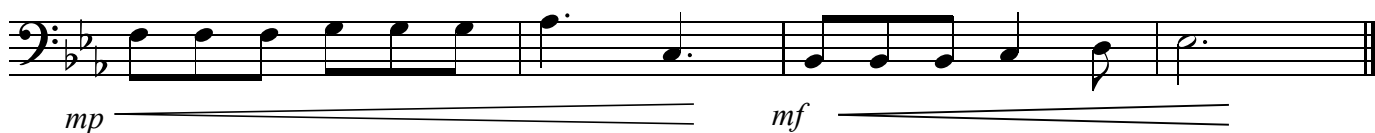
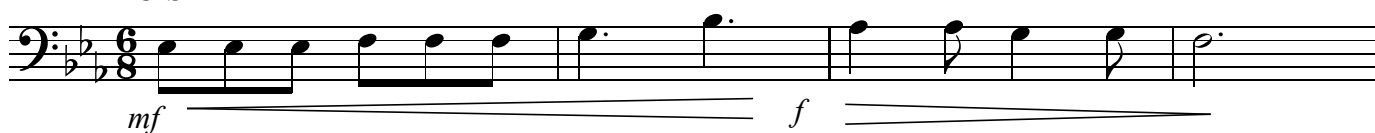
EXERCISE #2



EXERCISE #3



EXERCISE #4



SWOSU MIDDLE SCHOOL BAND CAMP

AUDITION MATERIAL - 2016

TUBA

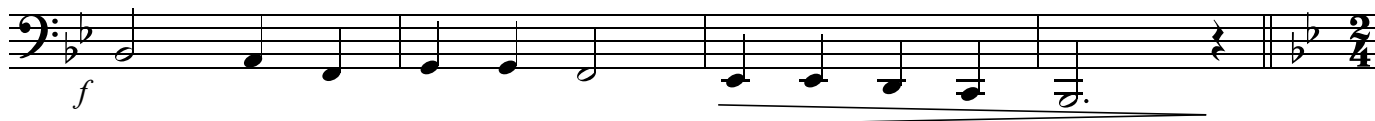
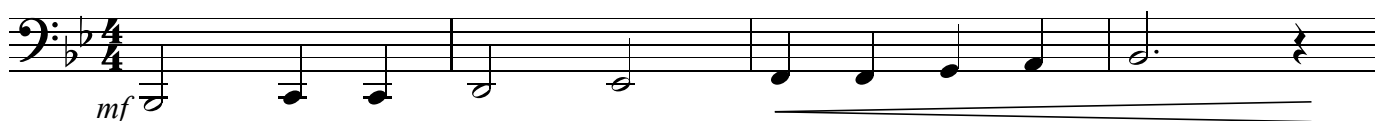
Bb Major Scale (Memorized)



Eb Major Scale (Memorized)



EXERCISE #1



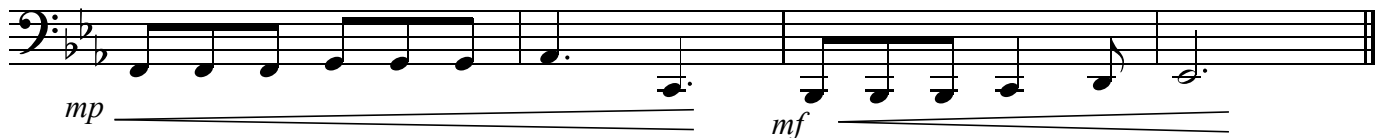
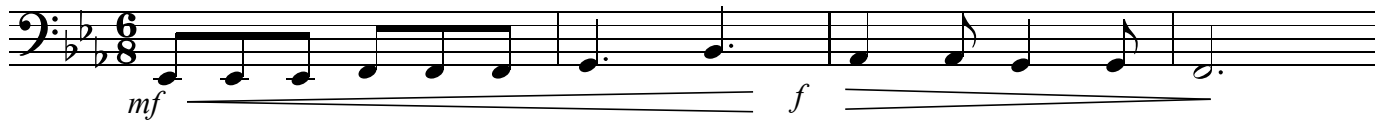
EXERCISE #2



EXERCISE #3



EXERCISE #4



SWOSU MIDDLE SCHOOL BAND CAMP

AUDITION MATERIAL - 2016

SNARE DRUM

EXERCISE #1

Exercise #1 consists of two staves of music in 4/4 time. The first staff begins with a *mf* dynamic and contains four measures of eighth notes. The second staff begins with a *f* dynamic and contains four measures of eighth notes, ending with a double bar line and a 2/4 time signature change.

EXERCISE #2

Exercise #2 consists of two staves of music in 2/4 time. The first staff begins with a *mp* dynamic and contains eight measures of eighth notes, with a *f* dynamic marking in the fifth measure. The second staff begins with a *mp* dynamic and contains eight measures of eighth notes, with a *f* dynamic marking in the fifth measure. The exercise ends with a 4/4 time signature change.

EXERCISE #3

Exercise #3 consists of two staves of music in 4/4 time. The first staff begins with a *f* dynamic and contains eight measures of eighth notes, with a *p* dynamic marking in the fifth measure. The second staff begins with a *f* dynamic and contains eight measures of eighth notes, ending with a double bar line and a 6/8 time signature change.

EXERCISE #4

Exercise #4 consists of two staves of music in 6/8 time. The first staff begins with a *mf* dynamic and contains eight measures of eighth notes, with a *f* dynamic marking in the fifth measure. The second staff begins with a *mp* dynamic and contains eight measures of eighth notes, with a *mf* dynamic marking in the fifth measure. The exercise ends with a double bar line.

SWOSU MIDDLE SCHOOL BAND CAMP

AUDITION MATERIAL - 2016

TIMPANI

Tune to F & Bb

EXERCISE #1

Exercise #1 consists of two staves of music in 4/4 time. The first staff begins with a key signature of one flat (Bb) and a common time signature of 4/4. It contains a sequence of eighth and quarter notes. The second staff continues the sequence, featuring a dynamic marking of *mf* at the beginning and *f* later. The piece concludes with a double bar line and a final 4/4 time signature.

EXERCISE #2

Exercise #2 consists of two staves of music in 2/4 time. The first staff begins with a key signature of one flat (Bb) and a common time signature of 2/4. It contains a sequence of eighth and quarter notes. The second staff continues the sequence, featuring a dynamic marking of *mp* at the beginning and *f* later. The piece concludes with a double bar line and a final 2/4 time signature.

EXERCISE #3

Exercise #3 consists of two staves of music in 4/4 time. The first staff begins with a key signature of one flat (Bb) and a common time signature of 4/4. It contains a sequence of eighth and quarter notes. The second staff continues the sequence, featuring a dynamic marking of *f* at the beginning and *p* later. The piece concludes with a double bar line and a final 4/4 time signature.

EXERCISE #4

Exercise #4 consists of two staves of music in 6/8 time. The first staff begins with a key signature of one flat (Bb) and a common time signature of 6/8. It contains a sequence of eighth and quarter notes. The second staff continues the sequence, featuring a dynamic marking of *mf* at the beginning and *f* later. The piece concludes with a double bar line and a final 6/8 time signature.